



# ECONOMIC AND SOCIAL STABILIZATION FUND

---

Quarterly Executive Report as of December, 2024

# EXECUTIVE SUMMARY

## Fourth Quarter 2024

Market Value  
**US\$ 3,618 million**

Withdrawals  
**US\$1,000 million**

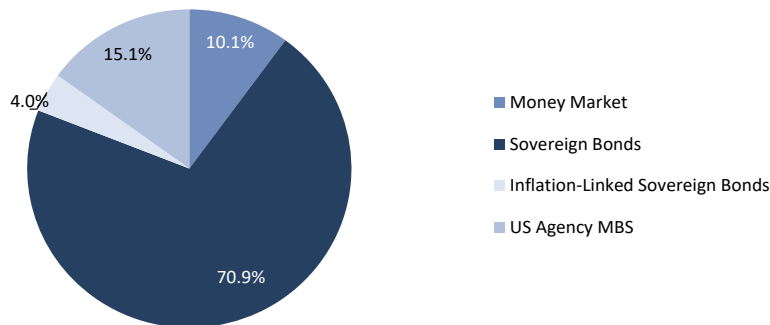
Net Income  
**US\$ 144 million**

### Net returns in dollars<sup>1</sup>



Source: Ministry of Finance, based on information provided by JP Morgan.

### Portfolio Composition



Source: Ministry of Finance, based on information provided by JP Morgan.

<sup>1</sup> Returns reported in this document correspond to the Time Weighted Rate of Return (TWR), unless otherwise stated. Returns for periods greater than one year are annualized. For periods of less than one year, the return corresponds to the change during the period. Net returns reported are net of management fees.

## I. MARKET VALUE OF THE FUND

**Table 1: Quarterly change in market value**  
(million of dollars)

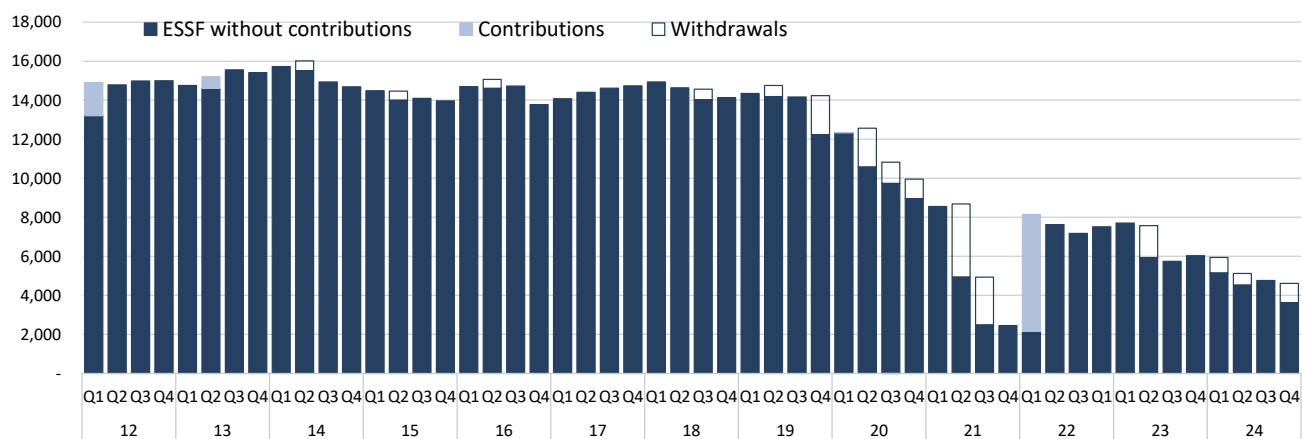
| Changes in Market Value<br>(US\$ million)      | 2023           |                |                |                | 2024           |                |                |                | Since<br>inception <sup>(a)</sup> |
|--|----------------|----------------|----------------|----------------|----------------|----------------|----------------|----------------|-----------------------------------|
|  | Q1             | Q2             | Q3             | Q4             | Q1             | Q2             | Q3             | Q4             |                                   |
| Starting Market Value                          | 7,514.2        | 7,700.7        | 5,932.6        | 5,740.1        | 6,030.1        | 5,144.1        | 4,519.2        | 4,762.6        | 0.0                               |
| Contributions                                  | 0.0            | 0.0            | 0.0            | 0.0            | 0.0            | 0.0            | 0.0            | 0.0            | 27,763.4                          |
| Withdrawals                                    | 0.0            | -1,640.5       | 0.0            | 0.0            | -800.0         | -607.2         | 0.0            | -1,000.0       | -28,292.8                         |
| Accrued Interest                               | 25.3           | 30.3           | 28.1           | 38.0           | 38.5           | 37.5           | 34.5           | 25.5           | 3,654.1                           |
| Capital Gains (Losses)                         | 161.7          | -157.6         | -220.4         | 252.5          | -124.1         | -54.6          | 209.4          | -169.4         | 530.2                             |
| Admin., Custody and Other Costs <sup>(b)</sup> | -0.5           | -0.2           | -0.2           | -0.5           | -0.5           | -0.6           | -0.5           | -0.5           | -36.7                             |
| <b>Final Market Value</b>                      | <b>7,700.7</b> | <b>5,932.6</b> | <b>5,740.1</b> | <b>6,030.1</b> | <b>5,144.1</b> | <b>4,519.2</b> | <b>4,762.6</b> | <b>3,618.2</b> | <b>3,618.2</b>                    |

<sup>(a)</sup> The ESSF was established by the merger of the fiscal assets saved under Decree Law N° 3.653 (1981) with those of the Copper Income Compensation Fund. The first payment into the new fund was made on March 6, 2007.

<sup>(b)</sup> It includes costs associated with consultants, accounting adjustment and

Source: Ministry of Finance, based on information provided by JP Morgan.

**Figure 1: Market value**  
(million of dollars)



Source: Ministry of Finance, based on information provided by JP Morgan.

## II. RETURNS

**Table 2: Net performance by asset class <sup>2</sup>**  
(percent)

| Returns <sup>(a)</sup>              | Last 3 Months | Year to Date  | Last 12 Months | Last 3 Years (Annualized) | Since Inception (Annualized) | Inception        |
|-------------------------------------|---------------|---------------|----------------|---------------------------|------------------------------|------------------|
| Money Market and Sovereign Bonds    | -3.64%        | -0.58%        | -0.58%         | -3.91%                    | -0.46%                       | 01-Aug-13        |
| Sovereign Inflation-Linked Bonds    | -1.76%        | 3.25%         | 3.25%          | -0.53%                    | 1.27%                        | 05-Aug-13        |
| US Agency MBS                       | -3.14%        | 1.44%         | 1.44%          | -                         | 6.91%                        | 02-Nov-23        |
| <b>Return in USD <sup>(b)</sup></b> | <b>-3.49%</b> | <b>-0.13%</b> | <b>-0.13%</b>  | <b>-3.60%</b>             | <b>1.38%</b>                 | <b>01-Apr-07</b> |
| Exchange Rate (CLP)                 | 10.70%        | 12.16%        | 12.16%         | 5.28%                     | 3.49%                        | 01-Apr-07        |
| <b>Return in CLP <sup>(c)</sup></b> | <b>6.83%</b>  | <b>12.01%</b> | <b>12.01%</b>  | <b>1.49%</b>              | <b>4.92%</b>                 | <b>01-Apr-07</b> |

<sup>(a)</sup> Time Weighted Return (it's calculated as the growth rate of the funds that were invested throughout the period).

<sup>(b)</sup> It includes the return of the equity portfolio that was invested from August 21, 2013 to September 27, 2021. In that date, the administrator liquidated all its positions whose resources were transferred to the fixed income portfolio on October 1, 2021.

<sup>(c)</sup> CLP return corresponds to the sum of the percentage change of the CLP/USD exchange rate and the USD return.

Source: Ministry of Finance, based on information provided by JP Morgan.

**Table 3: Net excess returns**  
(basis points)

| Excess Returns <sup>(a)</sup>         | Last 3 Months | Year to Date | Last 12 Months | Last 3 Years (Annualized) | Since Inception (Annualized) | Inception        |
|---------------------------------------|---------------|--------------|----------------|---------------------------|------------------------------|------------------|
| Money Market and Sovereign Bonds      | -3            | -5           | -5             | -3                        | 0                            | 01-Apr-07        |
| Sovereign Inflation-Linked Bonds      | -1            | 16           | 16             | -3                        | -6                           | 05-Aug-13        |
| US Agency MBS <sup>(b)</sup>          | 2             | 24           | 24             | 0                         | -126                         | 02-Nov-23        |
| <b>Total Portfolio <sup>(c)</sup></b> | <b>-2</b>     | <b>-1</b>    | <b>-1</b>      | <b>-8</b>                 | <b>-4</b>                    | <b>01-Apr-07</b> |

<sup>(a)</sup> Time Weighted Return (it's calculated as the growth rate of the funds that were invested throughout the period).

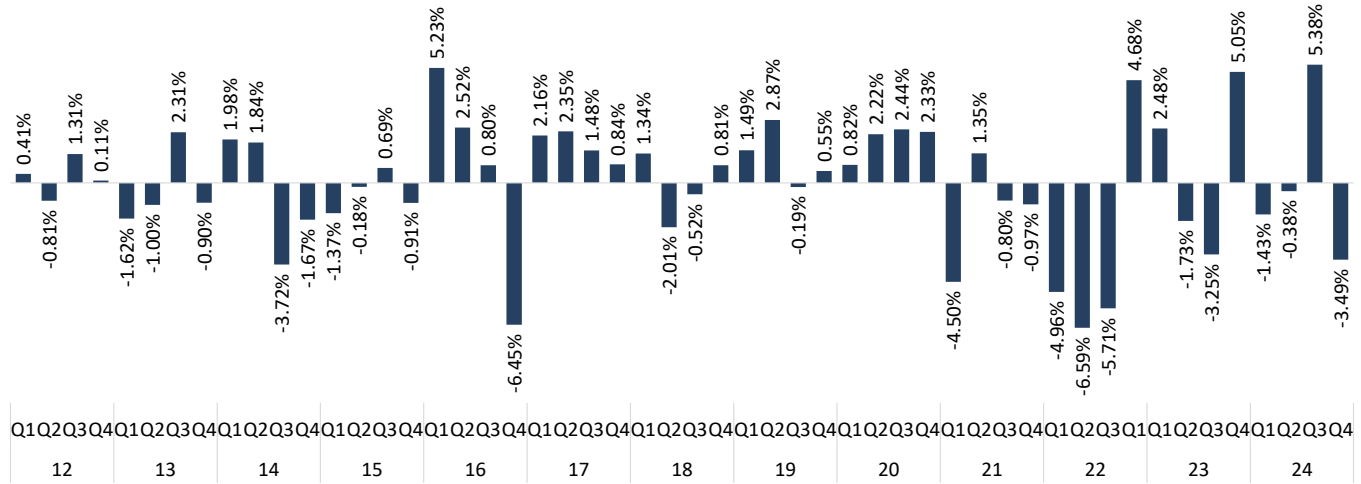
<sup>(b)</sup> The excess return of US Agency MBS is affected by the implementation period in November 2023. Excluding that period, the excess return since inception corresponds to 2 basis points.

<sup>(c)</sup> It includes the return of the equity portfolio that was invested from August 21, 2013 to September 27, 2021. In that date, the administrator liquidated all its positions whose resources were transferred to the fixed income portfolio on October 1, 2021.

Source: Ministry of Finance, based on information provided by JP Morgan.

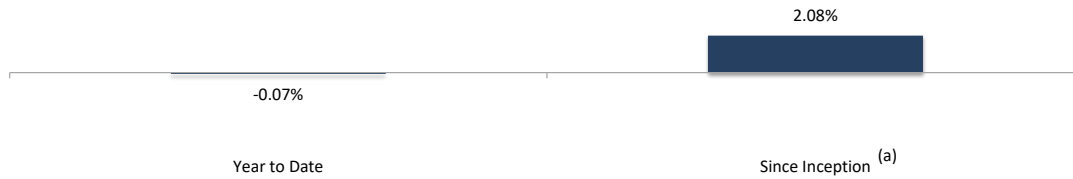
<sup>2</sup> Returns for periods of more than one year are compound annualized rates while those for less than a year correspond to the change as seen in the stated period. To meet high standards of transparency and provide a better assessment of the gains or losses on investments, the Ministry of Finance discloses the fund's return in different time horizons and currencies. Concerning the time horizon, it is important to note that, in keeping with the medium-and long-term investment policy, the return assessment should focus on that period, disregarding fluctuations that may occur monthly or quarterly. Regarding returns expressed in different currencies, the return in US dollars allows for an assessment that is more in line with the investment policy given that the fund's resources are wholly invested abroad and in foreign currencies. The return in Chilean pesos is also disclosed. This return reflects changes in the peso-dollar exchange rate and, therefore, may experience greater fluctuations. Finally, as with any investment, returns obtained in the past do not guarantee future positive results.

**Figure 2: Quarterly net returns in dollars (TWR) (percent)**



Source: Ministry of Finance, based on information provided by JP Morgan.

**Figure 3: Internal rate of return (IRR) (percent)**

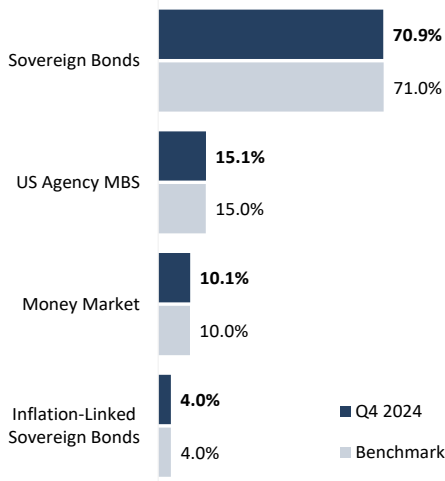


(a) The ESSF portfolio has a starting date of April 1, 2007.

Source: Ministry of Finance, based on information provided by JP Morgan.

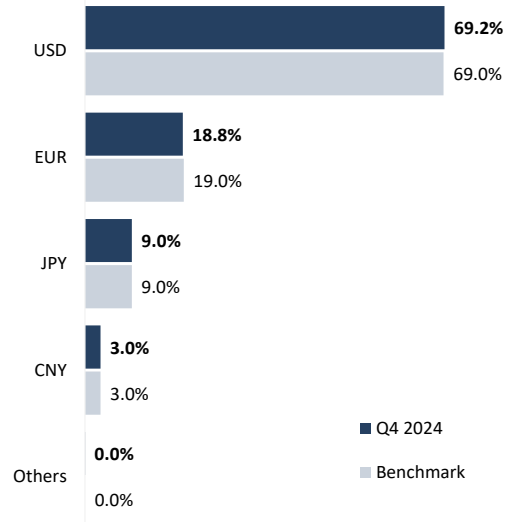
### III. PORTFOLIO ALLOCATION

**Figure 4: Investments by asset class**  
(percent of total)



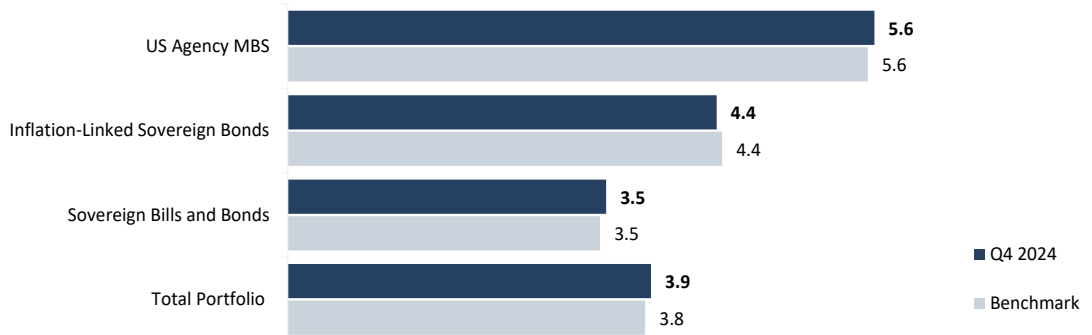
Source: Ministry of Finance, based on information provided by JP Morgan.

**Figure 5: Investments by currency**  
(percent of total)



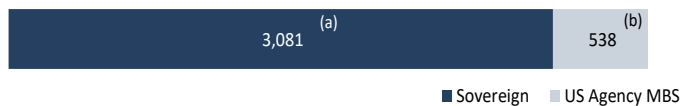
Source: Ministry of Finance, based on information provided by JP Morgan.

**Figure 6: Fixed income portfolio duration**  
(years)



Source: Ministry of Finance, based on information provided by JP Morgan.

**Figure 7: Exposure by type of risk**  
(million of dollars)



(a) Includes cash, cash equivalents, bank exposure, and forwards related to the Sovereign portfolio.

(b) Includes cash, cash equivalents, and bank exposure related to the U.S. Agency MBS portfolio.

Source: Ministry of Finance, based on information provided by JP Morgan.

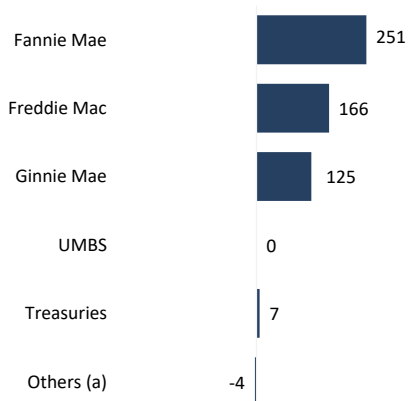
**Figure 8: Largest exposures to sovereign bonds and inflation-linked sovereign bonds**  
(million of dollars)



(a) It includes cash, cash equivalents and unsettled transactions.

Source: Ministry of Finance, based on information provided by JP Morgan.

**Figure 9: Largest exposures to US Agency MBS**  
(million of dollars)



(a) It includes cash, cash equivalents and payables.

Source: Ministry of Finance, based on information provided by JP Morgan.

**Table 4: Portfolio by issuer credit rating**  
(percent of the fixed-income portfolio)

| Fixed Income Portfolio by Issuer Credit Rating |                               |                                |                  |                       |
|--|-------------------------------|--------------------------------|------------------|-----------------------|
| Credit Rating                                  | Sovereigns<br>Bills and Bonds | Inflation-Linked<br>Sov. Bonds | US Agency<br>MBS | Total<br>Fixed Income |
| AAA  | 44.8%                         | 4.0%                           | 15.1%            | 63.9%                 |
| AA+  | 9.6%                          | 0.0%                           | 0.0%             | 9.6%                  |
| AA   | 2.4%                          | 0.0%                           | 0.0%             | 2.4%                  |
| AA-  | 7.3%                          | 0.0%                           | 0.0%             | 7.3%                  |
| A+   | 9.5%                          | 0.0%                           | 0.0%             | 9.5%                  |
| A  | 3.6%                          | 0.0%                           | 0.0%             | 3.6%                  |
| A-   | 0.0%                          | 0.0%                           | 0.0%             | 0.0%                  |
| Others <sup>(a)</sup>                          | 3.6%                          | 0.0%                           | 0.0%             | 3.6%                  |
| <b>Total fixed income</b>                      | <b>80.9%</b>                  | <b>4.0%</b>                    | <b>15.1%</b>     | <b>100.0%</b>         |

<sup>(a)</sup> It includes cash, cash equivalents and unsettled transactions.

Source: Ministry of Finance, based on information provided by JP Morgan.



## IV. OTHER INDICATORS

A commonly used indicator for monitoring the market risk of the portfolio is return volatility. In the quarter the standard deviation of returns of the ESSF was 7.72%.<sup>3</sup> The tracking error ex-post, an indicator used to measure how closely the portfolio returns track the returns of the benchmark, was 11 basis points at the quarter-end.<sup>4</sup>

**Table 5: Standard deviation and tracking error**

|                                       | Q4 2024 <sup>(a)</sup> |
|---------------------------------------|------------------------|
| Standard deviation (percentage)       | 7.72                   |
| Tracking error ex-post (basis points) | 11                     |

<sup>(a)</sup> Calculated using monthly returns of the last 3 years, annualized.

Source: Ministry of Finance, based on information provided by JP Morgan.

## V. SECURITIES LENDING INCOME AND ADMINISTRATION COSTS

The cost associated with the management of the fund by those responsible for the investment<sup>5</sup> was US\$ 314,119 during the quarter, while expenses associated with the custody service<sup>6</sup> were US\$ 137,263. Additionally, there were other outflows for US\$ 35,471. Finally, the securities lending program generated revenues of US\$ 118,754 during the quarter.

**Table 6: Summary of other flows for the quarter**

(In dollars)

|                    | Q4 2024        |
|--------------------|----------------|
| <b>Outflows</b>    |                |
| Administration     | 314,119        |
| Custody            | 137,263        |
| Others             | 35,471         |
| <b>Total</b>       | <b>486,853</b> |
| <b>Inflows</b>     |                |
| Securities Lending | 118,754        |
| Others             | -              |
| <b>Total</b>       | <b>118,754</b> |

Source: Ministry of Finance, based on information provided by JP Morgan and the Central Bank of Chile.

<sup>3</sup> Standard deviation of annualized gross monthly returns for the past three years.

<sup>4</sup> Standard deviation of annualized gross monthly excess returns of the portfolio against the benchmark for the past three years.

<sup>5</sup> The Central Bank of Chile is responsible for the investment of the sovereign fixed income portfolio (85% of the fund) and the US Agency MBS portfolio (15% of the fund). In the case of the last one, the administration is delegated to BNP Paribas.

<sup>6</sup> The Custodian bank is JP Morgan.

## VI. APPENDIX

### Benchmarks

A benchmark is defined for each asset class of the strategic asset allocation and corresponds to a representative index of the corresponding market.

| <i>Benchmark</i>   | Percent of<br>Total Portfolio |
|--|-------------------------------|
| <b>Sovereign Fixed Income</b>                                  |                               |
| ICE Bofa US Treasury Bills Index                               | 10.0%                         |
| Bloomberg Global Aggregate - Treasury: U.S. 1-10 Yrs           | 40.0%                         |
| Bloomberg Euro Aggregate - Treasury: Aaa 1-10 Yrs <sup>1</sup> | 19.0%                         |
| Bloomberg Euro Aggregate - Treasury: Aa 1-10 Yrs <sup>2</sup>  |                               |
| Bloomberg Global Aggregate - Treasury: Japan 1-10 Yrs          | 9.0%                          |
| Bloomberg Global Aggregate - Treasury: China 1-10 Yrs          | 3.0%                          |
| Bloomberg Global Inflation-Linked: U.S. TIPS 1-10 Yrs          | 4.0%                          |
| <b>US Agency MBS</b>   |                               |
| Bloomberg US Mortgage-Backed Securities Index                  | 15.0%                         |
| <b>Total</b>   | <b>100.0%</b>                 |

<sup>1</sup> Luxembourg is excluded.

<sup>2</sup> Estonia and Ireland are excluded.